



AQUA - B50

SINGLE PHASE PUMP CONTROL PANEL

USER MANUAL

Thank you for purchasing the AQUA-B50 Single Phase Pump Control Panel. Please read this manual thoroughly before making connections and turning ON the power. Following the instructions in this manual will enable you to obtain optimum performance from your new AQUA-B50 Single Phase Pump Control Panel. Please retain this manual for future reference.

DOC. No: KCCL/AQUA-B50/UM
AUGUST 2025



www.keltroncomp.org

Safety Instructions

Read the Instructions: Please read all the instructions in this section carefully before installation or use of the product. All the safety instructions must be followed.

Retain the Instructions: Please retain this Instruction Manual for future reference.



This symbol, wherever it appears, alerts you to the presence of uninsulated hazardous voltage that may be sufficient to constitute a risk of electric shock. External wiring to any terminal marked with this symbol must be done by a trained and instructed person only.



This symbol, wherever it appears adjacent to a component, alerts you that the concerned component can only be replaced by another of the exact same specifications.

WARNING

- To reduce the risk of electric shock, do not open the set. No user serviceable parts inside. Refer all servicing to qualified personnel only.

CAUTIONS

Water & Moisture: To reduce the risk of fire or electrical shock, do not expose this set to rain or moisture.

Power Source: The voltage & frequency of the AC mains supply, to which this set can be connected, is marked on the set. Do not connect this set to any power source other than those specified on the set.

Do not operate the MCB with wet hands.

Make sure the pump is submerged in water before starting (for submersible pumps).

Periodically inspect for loose connections or burnt components.

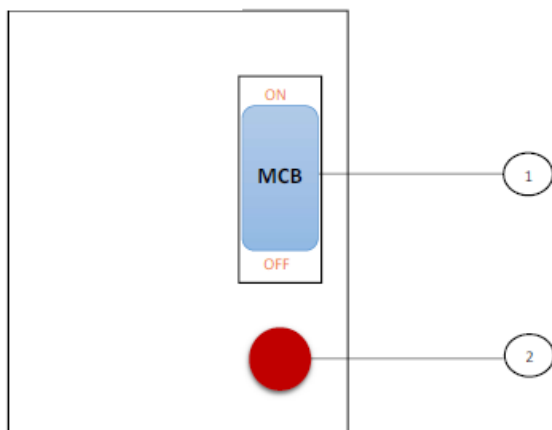
General Description of product

This product is for controlling the water pumps in open well and contain motor start capacitor circuitry. The newly designed water pump control panel box ensures efficient control of pump operations with enhanced safety features. It is compact, user friendly, and suitable for single phase open well pump system

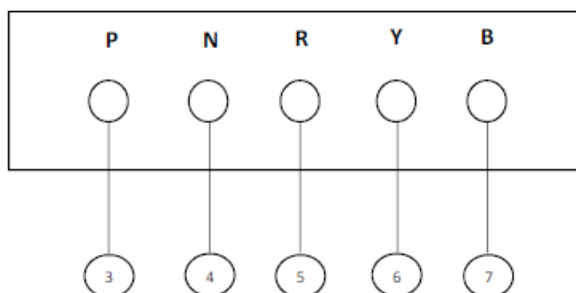
Specification	Details
Product Type	Single-Phase Control Panel For Open-Well Pump set
Model	AQUA- B Series
Voltage	240 VAC/50 Hz
Product Range	For 0.5 HP to 5 HP Pumps
MCB Rating	16 Amp to 32 Amp
Running Capacitor	25 μ F to 72 μ F
Application	For Household Purpose, Commercial Building, Farms etc
Brand	KELTRON
Weight	0.5 kg

Panel Control and Features

FRONT PANEL



BOTTOM PANEL



1. Power Switch & Circuit Breaker

This is power ON /OFF switch. Acts as the main switch to start/stop the pump and provides protection against overload/short circuit.

2. Power LED

Glows when the MCB is ON, indicating that power is supplied to the pump.

3. Phase of AC Power Supply

Input Connection to Single-Phase pump Control Panel

4. Neutral of AC Power Supply

Input Connection to Single-Phase pump Control Panel

5. Output connection to Main winding of Water Pump (R)

Output Connection from Single-Phase pump Control Panel.

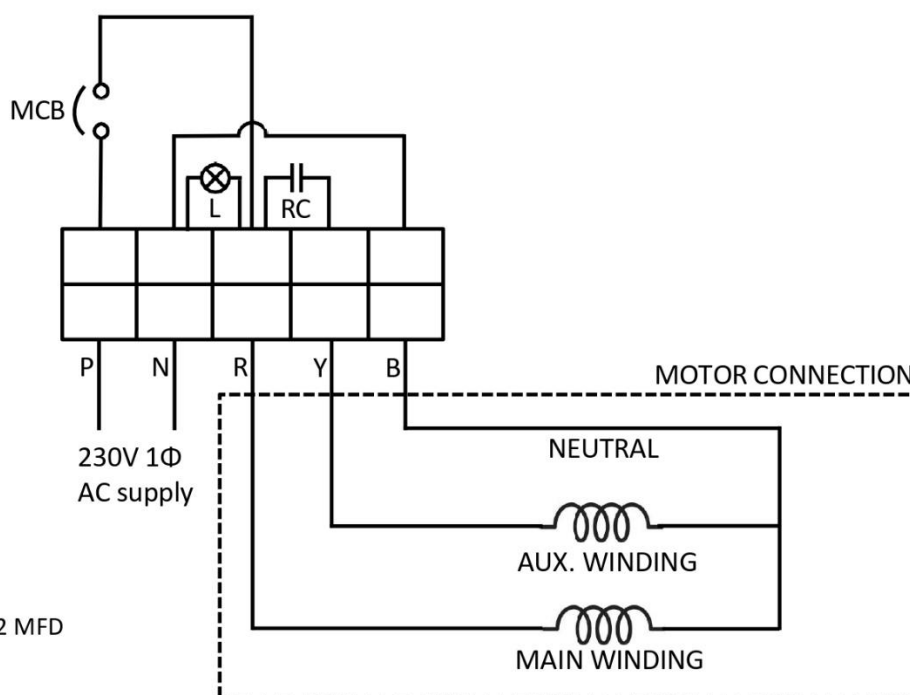
6. Output connection to auxiliary winding of Water Pump (Y)

Output Connection from Single-Phase pump Control Panel.

7. Output connection Neutral of Water Pump (B)

Neutral Connection

WIRING DIAGRAM



L -INDICATION LAMP

RC -MOTOR RUN CAPACITOR 25 to 72 MFD

MCB -16 to 32 Amp SP MCB, C CURVE

Operating Instructions

To Start the Pump:

1. Flip the **MCB to ON** position.
2. The **indication lamp** will turn ON, showing that the panel and pump are powered.
3. The pump will start running immediately.

To Stop the Pump:

1. Flip the **MCB to OFF** position.
2. The **indication lamp** will turn OFF.
3. The pump will stop running.

Troubleshooting Guide

Problem	Possible Cause	Solution
Indication lamp not glowing	No input supply or MCB is OFF	Check power supply and turn ON the MCB
Pump not running	Pump is faulty or wiring issue	Inspect wiring and pump motor
MCB trips frequently	Overload or short circuit	Check motor for faults, ensure proper sizing
Pump runs but no water flow	Dry run or suction problem	Ensure water level is adequate and pipe is clear

Maintenance Guidelines

- Check MCB operation and replace if it trips abnormally or feels loose.
 - Replace the indication lamp if it doesn't glow when MCB is ON.
 - Ensure all terminal connections are tight.
-

KELTRON[®]

A Government of Kerala Undertaking



KELTRON COMPONENT COMPLEX LIMITED
Keltron Nagar, Kalliasseri P.O., Kannur
Kerala, India, Pin-670 562
Phone : 0497-2780831-4
Fax : 0497-2781055
E-mail : info@keltroncomp.org
Web : www.keltroncomp.org

India's First and the Largest State Electronics Components Manufacturer